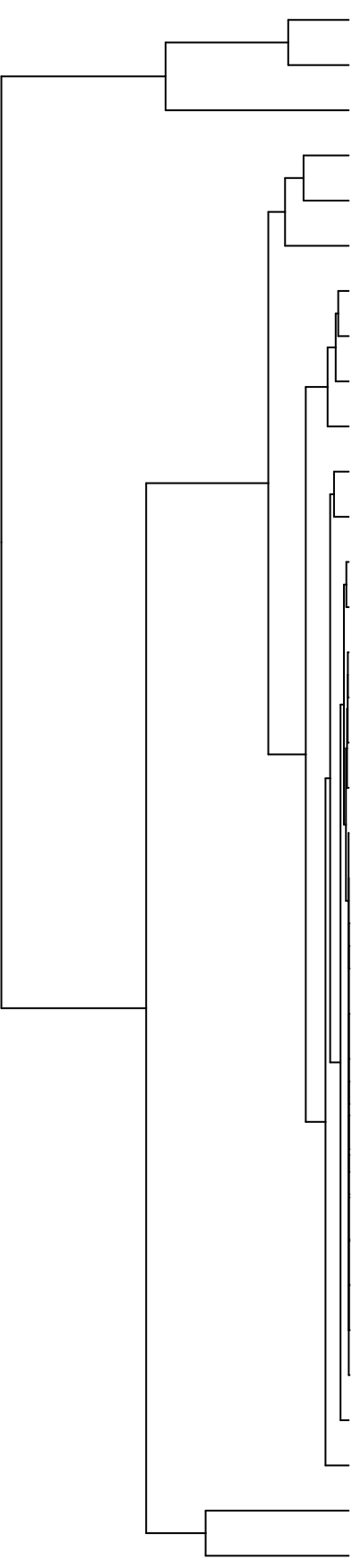


Group003
 Saliva -PMA
 Baseline -PMA



- Pasteurellaceae
- Veillonellaceae
- Neisseriaceae
- Porphyromonadaceae
- Campylobacteraceae
- Fusobacteriaceae
- Actinomycetaceae
- Leptotrichiaceae
- Micrococcaceae
- Lachnospiraceae
- Gemellaceae
- Carnobacteriaceae
- Erysipelotrichaceae
- Absconditabacteria_(SR1)_[F-1]
- Weeksellaceae
- Burkholderiaceae
- Atopobiaceae
- Flavobacteriaceae
- Staphylococcaceae
- Phyllobacteriaceae
- Moraxellaceae
- Propionibacteriaceae
- Sphingomonadaceae
- Pseudomonadaceae
- Comamonadaceae
- Yersiniaceae
- Microbacteriaceae
- Rhizobiaceae
- Hymenobacteraceae
- Saccharibacteria_(TM7)_[F-2]
- Mycobacteriaceae
- Saccharibacteria_(TM7)_[F-1]
- Enterobacteriaceae
- Streptococcaceae
- Prevotellaceae

- F28914_S018
- F28914_S013
- F28914_S017
- F28914_S014
- F28914_S016
- F28914_S015
- F28914_S004
- F28914_S002
- F28914_S006
- F28914_S005
- F28914_S003
- F28914_S001
- F28914_S029
- F28914_S030
- F28914_S026
- F28914_S028
- F28914_S027
- F28914_S025
- F28914_S053
- F28914_S052
- F28914_S051
- F28914_S049
- F28914_S054
- F28914_S041
- F28914_S050
- F28914_S040
- F28914_S037
- F28914_S039
- F28914_S042
- F28914_S032
- F28914_S038
- F28914_S066
- F28914_S065
- F28914_S061
- F28914_S064
- F28914_S063
- F28914_S062

Samples

Family